

Eden District Council  
Overview and Scrutiny Committee  
12 May 2022

**Zero Carbon Update**

|                         |                             |
|-------------------------|-----------------------------|
| <b>Portfolio:</b>       | Green Growth                |
| <b>Report from:</b>     | Assistant Director Delivery |
| <b>Wards:</b>           | All Wards                   |
| <b>OPEN PUBLIC ITEM</b> |                             |

**1 Purpose**

- 1.1 This report is to update members on progress of the Zero Carbon Strategy and associated action plan, with particular attention to the COP26 and Green Business Grant Funds.

**2 Recommendation**

- 2.1 It is recommended that Overview and Scrutiny Committee note this report.

**3 Report Details**

- 3.1 Eden District Council declared a Climate and Ecological Emergency in July 2019. The objective is to make the Council's operations zero carbon by 2030, to encourage initiatives which help Eden District to become net zero carbon; to improve biodiversity while preserving our working cultural landscapes and economies. Our wish is for Eden to be a sustainable place where everyone has an opportunity to prosper.
- 3.2 This strategy has been produced to show the actions that the Council will take to achieve net zero carbon emissions across the Council's activities, as well as working to influence the wider district to work towards the same objective by 2030.
- 3.3 The full Zero Carbon Strategy and action plan is detailed in Appendix 1.
- 3.4 The Zero Carbon and Biodiversity Strategy contains detailed action plans which are captured in the corporate performance management system.
- 3.5 Appendix 2 details progress against the corporate priorities as at Q4.
- 3.6 Appendix 3 details progress against the non-corporate actions as at Q4.
- 3.7 All activity is performing against target with significant progress seen in the development and delivery of the COP26 Community Grant fund and the Greening Eden Business Scheme detailed below.
- 3.8 The Sustainability team is now fully resourced, with two new officers appointed to the previously vacant positions in February. This should allow further acceleration of progress against the actions this year.

## **4 COP 26 Community Grant Fund**

- 4.1 In the Zero Carbon Strategy approved in 2021, the objective was included to launch the new COP26 community funding grant to engage with the community to develop green projects that will have a significant impact of carbon emissions and that will benefit communities across the Eden District.
- 4.2 Grants are available for groups and organisations who are involved in sustainability projects that benefit the residents of communities in Eden. Groups and organisations must demonstrate how their project or event will deliver wide benefit, contributing to the sustainability, vitality and well-being of Eden's communities.
- 4.3 The COP26 community fund scheme aims to:
- ✓ Improve the natural environment in Eden district
  - ✓ Encourage sustainability and long-term actions
  - ✓ Promote community engagement and participation in environmental and sustainability projects
- This fund will assist Eden District Council to enact its plan to reach net-zero by 2030, improve the use of renewable energy, promote and enhance natural habitat and biodiversity, reduce air pollution and improve the health and wellbeing of the residents of Eden.
- 4.4 Appendix 4 contains the full draft guidance for the scheme which had its soft launch in April pending approval from legal services.
- 4.5 8 community groups have expressed interest in the scheme to date.
- 4.6 In May 2022 Cabinet will be asked to review a paper asking for approval of awards to be delegated to the Assistant Director Delivery in consultation with the Leader and Green Growth Portfolio Holder to speed up grant giving.

## **5 Greening Eden Business Scheme**

- 5.1 The Greening Eden Businesses scheme is being run by Eden District Council in partnership with Cumbria Business Environment Network (CBEN).
- 5.2 Greening Eden Businesses supports local businesses to reduce their carbon emissions, and save money at the same time.
- 5.3 Applications to the scheme are accepted on a rolling programme throughout the year allowing businesses to apply at the most appropriate time for them. Applications are assessed by a grant panel.
- 5.4 To date 2 projects have been approved in Kirkoswald and Brampton, near Appleby. Both of these are Solar PV projects with a total value of £10,441.68.
- 5.5 Feedback from the businesses in Eden suggests that increasing the award levels would enable a wider range of project to be undertaken and a report is being tabled for Cabinet to consider proposals in June.

## **6 Policy Framework**

- 6.1 The Council has four corporate priorities which are:
- Sustainable;
  - Healthy, safe and secure;
  - Connected; and

- Creative

View the Council Plan approved by Council November 2019

6.2 This report meets sustainable, healthy, safe and secure corporate priorities.

## 7 Consultation

7.1 This report summarises information provided to the Leader and Green Growth Portfolio holder in informal portfolio meetings.

## 8 Implications

### 8.1 Financial and Resources

8.1.1 Any decision to reduce or increase resources or alternatively increase income must be made within the context of the Council's stated priorities, as set out in its Council Plan 2019-2023 as agreed at Council on 7 November 2019.

8.1.2 There are no proposals in this report that would reduce or increase resources.

### 8.2 Legal

8.2.1 In June 2019, the UK became the first major country to legislate for a net-zero target for carbon emissions by 2050.

### 8.3 Human Resources

8.3.1 There are no HR implications to consider with this report.

### 8.4 Environmental

8.4.1 There are significant effects on carbon emissions and ecosystems which are detailed in full in appendix 1.

### 8.5 Statutory Considerations

| <b>Consideration:</b>                            | <b>Details of any implications and proposed measures to address:</b>   |
|--|--|
| Equality and Diversity                           | None   |
| Health, Social Environmental and Economic Impact | A wide range of actions are being introduced as a result of the approved strategy, saving carbon in a multitude of ways; ultimately offsetting and sequestration will be required to balance the 'un-saveable carbon', all plausible savings will be targeted, overall resulting in a below net zero carbon balance. |
| Crime and Disorder                               | None   |
| Children and Safeguarding                        | None   |

## 8.6 Risk Management

| <b>Risk</b>   | <b>Consequence</b>  | <b>Controls Required</b>   |
|---|---|--|
| Risks to public, financial or reputational risk to Council – By failing to take action to reduce impact on climate change | In the future, Cumbria should expect more variance during the seasons with hotter and drier summers and wetter and milder winters.<br>Reputational damage if seen to not be taking suitable action. | Implementation of a wide range of activity and engagement to raise awareness and reduce emissions. |

## 9 Other Options Considered

9.1 None.

## 10 Reasons for the Decision/Recommendation

10.1 An update on Zero Carbon is included in this Committee's work programme.

### Tracking Information

| <b>Governance Check</b>                  | <b>Date Considered</b> |
|--|------------------------|
| <b>Chief Finance Officer (or Deputy)</b> | n/a                    |
| <b>Monitoring Officer (or Deputy)</b>    | n/a                    |
| <b>Relevant Assistant Director</b>       | 29 April 2022          |

**Background Papers:** None

**Appendices:**

- Appendix 1 - Zero Carbon Strategy**
- Appendix 2 - Pentana Corporate Priorities- Zero Carbon Strat and Biodiversity**
- Appendix 3 – Pentana Sustainability Actions Report (non-corporate reporting)**
- Appendix 4 – COP26 Community Grant Fund Guidance**

**Contact Officer:** Laura Cadman, Assistant Director Delivery



# ZERO CARBON EDEN

Our strategy for reducing the Council's emissions to zero and those of the district to net-zero by 2030.

## Contents

|  |    |
|--|----|
| Zero Carbon Eden.....  | 3  |
| 1. Introduction.....   | 3  |
| 1.1 Climate Change.....  | 3  |
| 1.2 Cumbria.....   | 3  |
| 1.3 Eden District.....   | 4  |
| 2. Eden District Council’s Role.....                                 | 7  |
| 2.1 Climatic and Ecological Emergency.....                           | 7  |
| 2.2 The Corporate Plan 2019-2023.....                                | 7  |
| 2.3 Recovery Plan.....   | 8  |
| 2.4 Carbon Footprint.....  | 8  |
| 2.5 Eden District Council’s Carbon Footprint.....                    | 9  |
| 2.6 Eden District’s carbon footprint.....                            | 10 |
| 2.7 Parish level.....  | 11 |
| 3. Vision for low carbon Cumbria.....                                | 12 |
| 4. Eden District’s Action Plan.....                                  | 14 |
| 4.1 Carbon Reduction and Biodiversity Action Plan – The Context..... | 16 |
| 4.2 Initial Action Plan.....   | 16 |
| 4.3 Our Asset and Energy.....  | 18 |
| 4.4 Sustainable Transport.....                                       | 20 |
| 4.5 Waste.....   | 22 |
| 4.6 Support.....   | 24 |
| 4.7 Community Engagement and Publicity.....                          | 26 |
| 4.8 Land Use.....  | 27 |
| 5. Biodiversity.....   | 28 |
| 5.1 Introduction.....  | 28 |
| 5.2 Biodiversity in context.....                                     | 28 |
| 5.3 Legislation and policy.....                                      | 29 |
| 5.4 Eden District Council’s role.....                                | 29 |
| 5.5 Our vision.....  | 30 |
| 5.6 Biodiversity Net Gain.....                                       | 30 |
| 5.7 BNG Methodology:.....  | 30 |
| 5.8 Priority habitats and species.....                               | 31 |

|      |   |    |
|------|---|----|
| 5.9  | Priorities habitats .....                     | 31 |
| 5.10 | Priorities Species .....                      | 33 |
| 6.   | Biodiversity Objectives and Action Plan ..... | 35 |
| 7.   | Monitoring progress.....                      | 38 |

# Zero Carbon Eden

## 1. Introduction

### 1.1 Climate Change

Climate change can be characterised as a long-term change in the average local, regional, weather patterns and global climate. The changes observed in the Earth's climate since the early 20<sup>th</sup> century are primarily driven by human activity and particularly, by burning fossil fuels which increases the amount of heat-trapping greenhouse gases in the Earth's atmosphere<sup>1</sup>. An increase in global temperature has contributed to more regular and intense extreme climatic events such as floods, droughts, storms and many more that are impacting human lives and ecosystems across the globe.

Figure 1 shows that the average temperature of the United Kingdom has been steadily increasing since the 2000s. Since 1884, the 5 warmest years in the United Kingdom have been reported in the last 14 years.

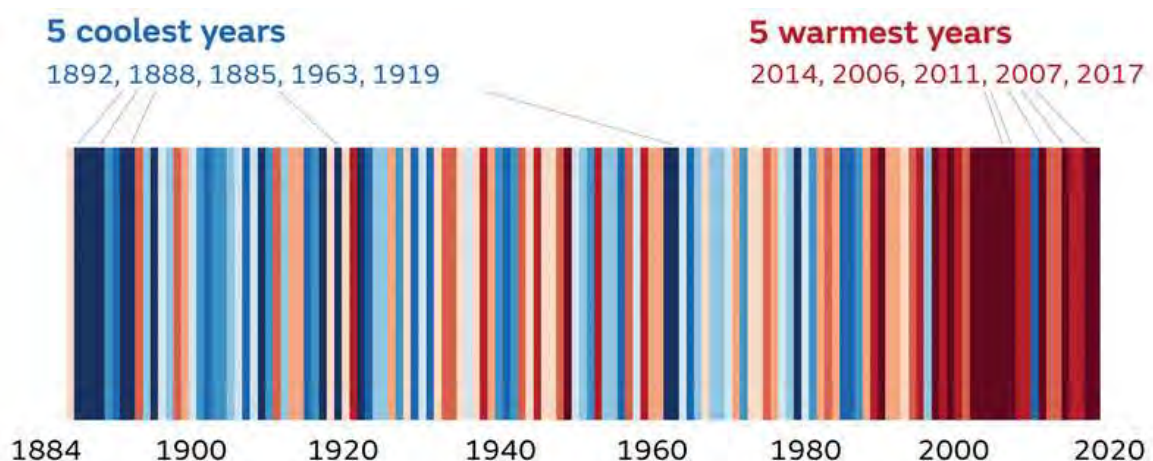


Figure 1, Warmer and cooler years in the UK since 1884 (Met Office, 2019)

### 1.2 Cumbria

In Cumbria the climate is influenced by the North Atlantic Drift which, along with the mountainous terrain makes it the wettest region of England. The average annual precipitation is about 3,000 mm but this varies greatly depending of the location<sup>2</sup>.

Over the past decade, Cumbria has been affected by the effect of climate change through 3 flooding events, including Storm Desmond in 2015, which caused much damage and disruption across the region.

---

<sup>1</sup> [NASA. 2020. Overview: Weather, Global Warming and Climate Change:](#)

<sup>2</sup> [Met office. 2020. What is Climate Change?](#)



These storms are predicted to be more frequent due to the actual trends of climate change, which mean that Cumbria will be more vulnerable to more frequent and intense floods and storm episodes.

In the future, Cumbria should expect more variance during the seasons with hotter and drier summers and wetter and milder winters.

### 1.3 Eden District

Similar to the general climate of Cumbria, the Eden District experiences the same maritime climatic influence, but due to its location, the district appears to be much dryer than the average of Cumbria with only 800mm per year<sup>3</sup>.

Figure 2 shows the evolution of temperature and precipitation recorded by Newton Rigg's weather station. The average temperature has risen by around 1 degree Celsius since 1959, but 60% of the average annual temperature reaching >9°C have been recorded after 2000.

The precipitation overall has increased by 200mm in 60 years.

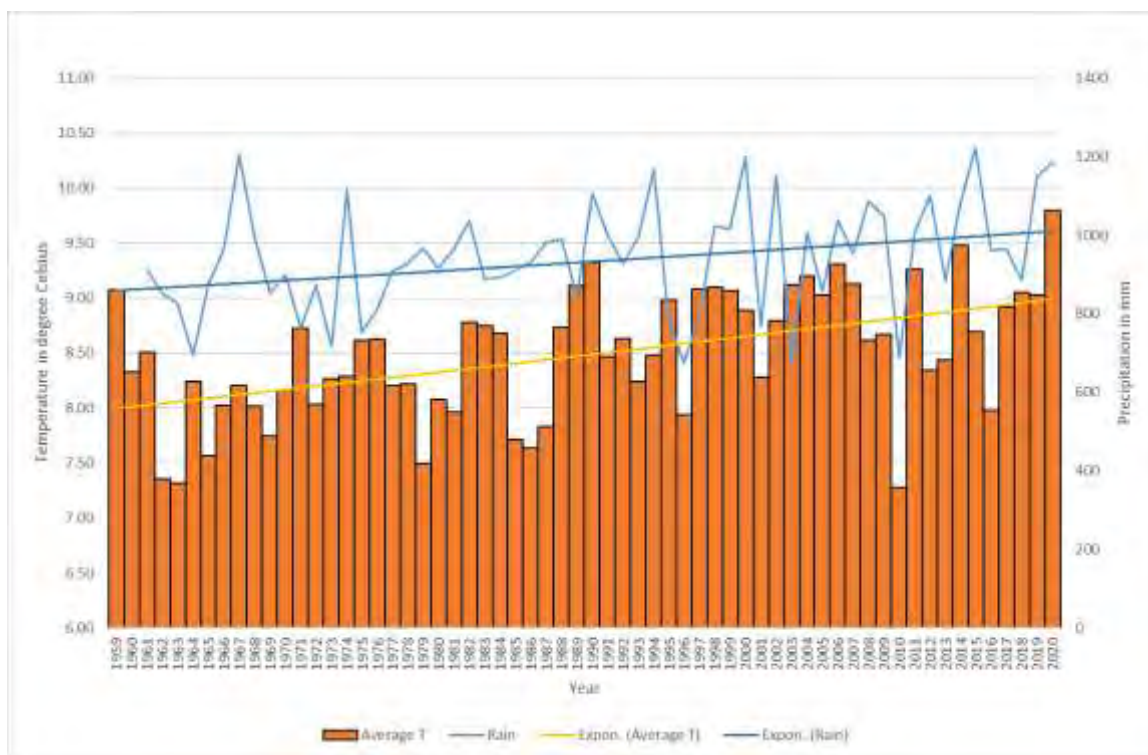


Figure 2, Annual temperature and precipitation variation since 1959 (Cortiula C.)

The climate across the Eden District will be further affected by the rise in average temperature and precipitation leading to an increase in frequency and severity of extreme weather events (storms, draught, hails, etc.). Due to its geographical location, the landscape of the Eden District is mainly composed by lowland (below 60m) making the area more subject to frequent and long periods of flooding<sup>3</sup>

<sup>3</sup> [Met office 2016; North West England & Isle of Man : climate](#)

According to the Paris Agreement, 196 parties including the United Kingdom have agreed to curb global warming to well below 2 degrees Celsius, preferably by 1.5 degrees Celsius, compared to pre-industrial levels. To help tackle the effect of climate change, most levels of government must act urgently. Nowadays, 74% of local authorities throughout the United Kingdom have already declared a climate emergency. Small scale actions are essential to tackle the climate and ecological emergencies<sup>4</sup>

## **Strategic Planning**

The following action plan fits with and alongside all other council plans and strategies and ultimately the Sustainability objectives outlined in this document will need to be reflected in all future policies and provision of services.

## **COP26**

This year the UN Climate Change Conference (COP26) is bringing together almost every nation in the UK to reach agreement on how to tackle climate change and how to implement the Paris Agreement made in 2015.

The COP26 will be the moment for countries to update their plans for reducing carbon emissions and focus on more effective means to adapt to the impacts of climate change and climate-resilient development to keep temperature rise to 1.5 alive. The decade out to 2030 will be crucial and the COP 26 needs to be decisive.

More than 190 world leaders, tens of thousands of negotiators, government representatives, businesses and citizens will meet in Glasgow for twelve days to talk and explore solutions.

The main goals of the COP26 are:

1. Secure global net-zero by mid-century and keep 1.5 degrees within reach
2. Adapt to protect communities and natural habitats
3. Mobilise finance
4. Work together to deliver

Eden District Council's Carbon Reduction and Biodiversity Action Plan has aligned its sustainability actions in relation to the above COP26 goals.

---

<sup>4</sup> United Nation, 2015. Paris Agreement

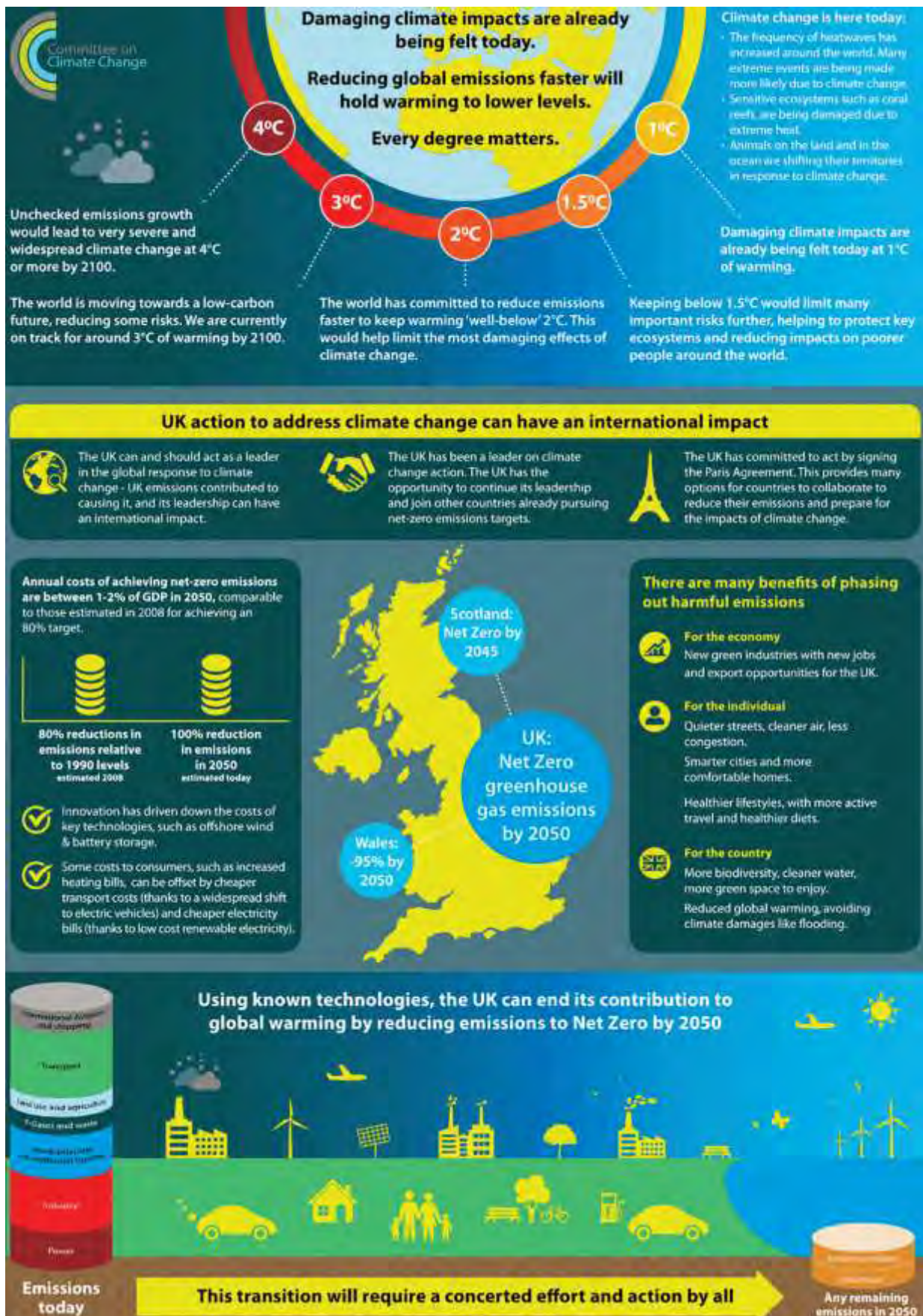


Figure 3, Impact of Climate Change and UK action plan to be carbon neutral by 2050 (Committee on Climate Change, 2019)

## 2. Eden District Council’s Role

In order to respond to climate issues that have been caused by an increase in anthropogenic greenhouse gas emissions, Eden District Council is taking action to reduce our emissions and to find solutions to mitigate the effects of climate change.

### 2.1 Climatic and Ecological Emergency

Eden District Council declared a Climate and Ecological Emergency in July 2019. The objective is to make the Council’s operations zero carbon by 2030, to encourage initiatives which help Eden District to become net zero carbon; to improve biodiversity while preserving our working cultural landscapes and economies. Our wish is for Eden to be a sustainable place where everyone has an opportunity to prosper.

This strategy has been produced to show the actions that the Council will take to achieve net zero carbon emissions across the Council’s activities, as well as working to influence the wider district to work towards the same objective by 2030.

At Eden District Council we are responsible for our own emissions and aspire to set an example to other organisations and residents that net zero carbon is achievable. As a local authority we also have the ability to directly and indirectly influence the emissions of the district as a whole.

### 2.2 The Corporate Plan 2019-2023

The Zero Carbon and Biodiversity Strategy is fundamental to the delivery of our Council Plan. This underpins the Council’s work by setting out its clear vision for the district and the priorities it will focus on in order to deliver that vision.

The Council Plan identifies its vision as “For Eden to become a place where the people act together to meet the needs of all and ensure the wellbeing of future generations.”

In order to achieve this goal there is a focus on four priorities:

| Eden District Council’s Corporate Priorities   |   |   |  |
|--|---|---|--|
| <p><b>Sustainable</b><br/>Co-produce economic opportunities and strategies that will protect Eden’s working cultural landscapes and biodiversity aiming to store more carbon than is produced in the District.</p> | <p><b>Healthy, Safe and Secure</b><br/>Improve housing, both new build and existing, working towards self-sufficiency in energy and co-produce healthy, connected, prosperous communities for all, urban and rural.</p> | <p><b>Connected</b><br/>Improve digital connectivity, transport and access to attract and support businesses, employees and families, connecting Eden with the global economy and knowledge industries. People are connected in communities with access to education, work, healthcare and leisure.</p> | <p><b>Creative</b><br/>Support Businesses to respond to national and global changes and encourage innovation in tourism, food and green industries and develop arts and cultural activities to add to town centre vibrancy, support communities and improve health and well-being.</p> |

This strategy will support the delivery of all corporate priorities with a particular focus on improving the Council's Carbon Footprint (becoming a net-zero district) and protecting Eden's working cultural landscapes and biodiversity, aiming to store more carbon than is produced in the District. In addition to this and in conjunction with the Housing Strategy 2021-2026 there will also be an emphasis on improving housing (both new and existing) to be more energy efficient.

### 2.3 Recovery Plan

The COVID-19 pandemic has highlighted the importance of the environment around us, bringing many of us closer to nature. The pandemic has also provided us with a unique opportunity for change as we have had to reconsider the way we live. It is essential that we continue to welcome change as we recover from the pandemic, to create a future that sees healthy populations living in harmony with a thriving natural environment.

The strategic aim of our Recovery Plan is to Build Back Better in a way that rebalances the relationship between the economy, communities and the environment to ensure repaid rebuilding where needed and sustainable growth and improvement into the future. Our Recovery Plan contains many cross cutting interventions working within our key priorities. Many of these interventions fall under sustainability, aiming to reduce carbon and support biodiversity while promoting our other priorities. This Strategy builds on the Recovery Plan, developing sustainability initiatives and showing what can be done to reduce Eden District Council's carbon footprint, as well as the carbon footprint of the district.

### 2.4 Carbon Footprint

Carbon footprint is defined by the total amount of greenhouse gases (GHG) emitted directly and indirectly to support a business or a person's lifestyle and activities. Carbon footprints are usually measured in equivalent tonnes of CO<sub>2</sub> over a year and can be related to an individual, an entity, an event, a production chain, and many other activities<sup>5</sup>.

To aid analysis and to understand the greenhouse gas emissions sources, the different gas emissions are generally broken down into 3 major categories<sup>6</sup>

- **Scope 1:** All direct emissions produced from or under the control of an organisation's operations.
- **Scope 2:** Indirect emissions from electricity consumed by the organisation.
- **Scope 3:** All other indirect emissions from activities linked with the organisation that derive from sources that it doesn't own or control.

---

<sup>5</sup> Solé A., Miro L., F.Cabeza L., 2018. High temperature Thermal Storage Systems Using Phase Change, Chapter 10 – Environmental Approach. Academic Press.

<sup>6</sup> GHG Protocol and Carbon Trust Team, 2013. Technical Guidance for Calculating Scope 3 Emissions (version 1.0)

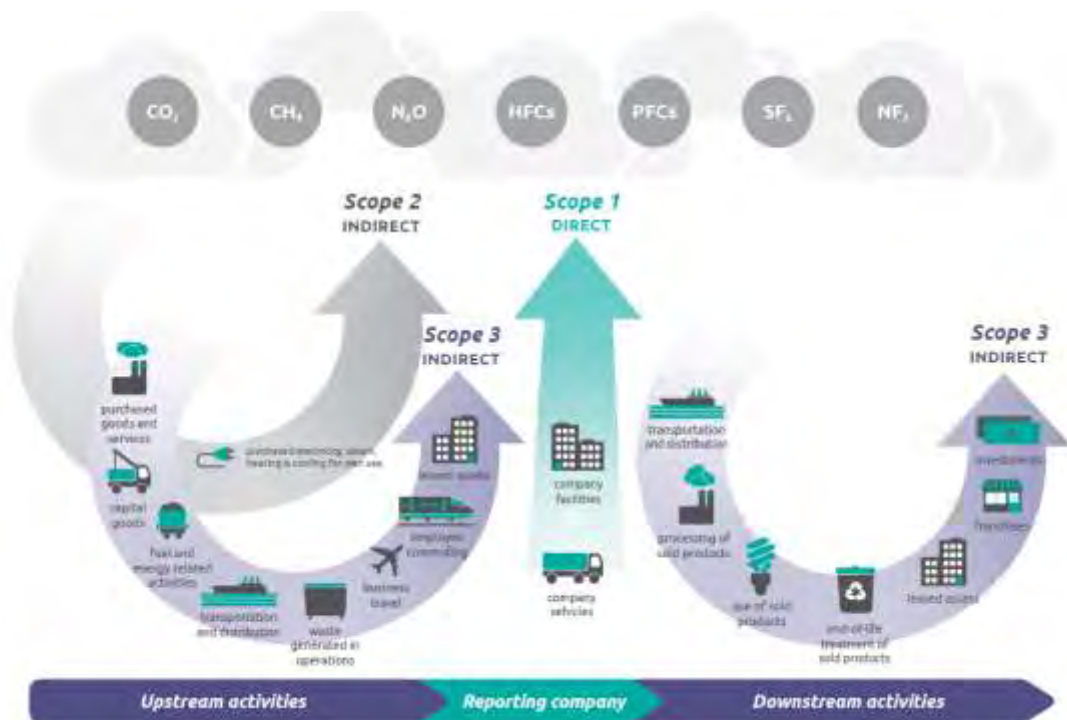


Figure 4, sources of GHG emissions categorised in their scopes. (Greenhouse Gas Protocol, 2013)

## 2.5 Eden District Council's Carbon Footprint

The following carbon footprint data measures the greenhouses gas emissions that have been emitted under the council's direct operation. This includes emissions from the council buildings, energy consumption, and fleet vehicles and use of personal vehicles for officers.

During 2019/20, Eden District Council has released about 272.9 tCO<sub>2</sub>e.

Figure 5 shows the estimated CO<sub>2</sub>e emissions from Eden District Council for 2019/20. Electric use represents 51% of our total emissions, this includes electric use in our buildings, but also from street lighting and other street scene functions. Followed by our gas consumption at 32% for heating our properties and staff business travel, at 15%, accounting for the journeys made by staff for work purpose. Therefore these are the main areas to focus our effort to internally to reduce our carbon footprint. Water related emissions have a much smaller impact of 1% respectively, however it is still an important areas to manage to avoid any over consumption.

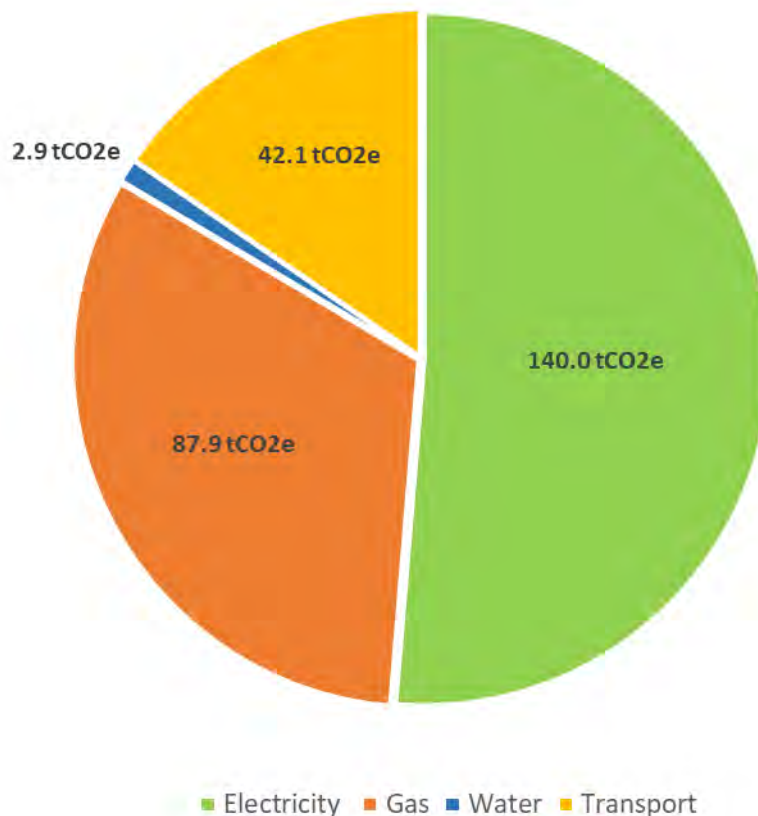


Figure 5, Eden District Council carbon emission for 2019/2020 (scope 1&2)

## 2.6 Eden District's carbon footprint

The carbon footprint of each Cumbrian local authority area has been individually estimated by *Small World Consulting* in their Carbon Baseline for Cumbria report<sup>7</sup>, allowing us to observe the disparity in carbon footprint from one district to another.

Production-based greenhouse gas emissions calculate emissions that are generated from the domestic production of goods and services regardless of whether they are consumed domestically or abroad<sup>8</sup>.

As shown in Figure 6, Eden District produces 703ktCO<sub>2</sub>e per year. Compared to all other districts, Eden District register the highest CO<sub>2</sub> emissions in Cumbria, followed closely by South Lakeland with 665 ktCO<sub>2</sub>e. A part of the calculation has integrated

<sup>7</sup> Moss J., Berners-Lee M., Freitag C., and Donaldson S., 2020. A Carbon Baseline for Cumbria. Small World Consulting Ltd

<sup>8</sup> Karakaya E., Yılmaz B., and Alataş S., 2018. How Production Based and Consumption Based Emissions Accounting Systems Change Climate Policy Analysis: The Case of CO<sub>2</sub> Convergence. MPRA

our potential CO<sub>2</sub>e offsetting from Land Use, Land Use Change and Forestry (LULUCF), which has the potential to offset 30ktCO<sub>2</sub>e.

(Carbon offsetting is a way to compensate for our CO<sub>2</sub>e emissions by funding an equivalent carbon dioxide saving elsewhere).

As previously stated, the CO<sub>2</sub>e emissions associated with industrial and commercial use and agriculture are the highest in Eden compared to the other districts. However, emissions related to domestic energy are amongst the lowest in Cumbria.

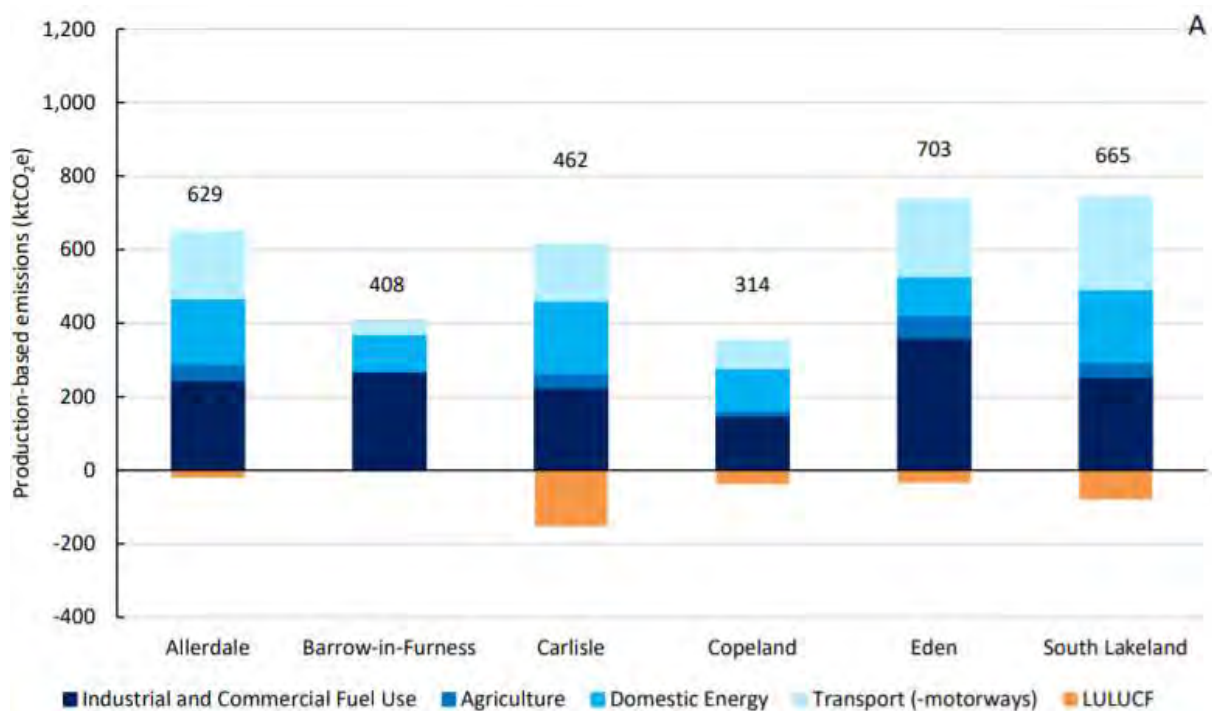


Figure 6, Emissions of CO<sub>2</sub>e according to each Cumbrian Districts (Moss J., et al, 2020)

Production-based emissions do not integrate the production of goods and services that are used in the district (by tourists, industries and/or residents) when they are produced somewhere else in the United Kingdom or abroad. In order to provide a more reliable carbon footprint for the district, it is necessary to take into account the consumption-based emissions as well.

## 2.7 Parish level

To assess the carbon footprint of the different parishes that compose Eden District, a carbon calculation tool has been created by Centre of Sustainable Energy.

This [online tool](#) will allow Eden District Council to observe carbon emissions emitted locally and to engage with parishes to find mitigation and adaption solutions that will help them reduce their carbon footprint.



### 3. Vision for low carbon Cumbria.

Cumbria has used the services of *Small World Consultancy* to assess the carbon footprint of the county and Cumbrian districts. In the report Carbon Baseline for Cumbria, Small World Consulting provides a vision of what Cumbria's activities could look like in zero carbon scenario.

*"The targets and recommendations that follow are intended as part of wider roadmap to a better future for Cumbria. We imagine them to be implemented in ways that maximise co-benefits, especially in terms of health, community and economy."*

This overall vision for Cumbria is broken down in the Carbon baseline Report from the perspective of residents, visitors and businesses. This is summarised as follows:

To pursue the carbon reduction and actions to tackle climate change, Eden District Council has joined the Zero Carbon Cumbria Partnership (ZCCP) and the Local Authority Climate Policy Group (LACPG).

The Zero Carbon Cumbria Partnership is working with more than 80 partners (Cumbrian local authorities, businesses, local sustainability groups, schools, National Parks, Electricity North West and many more) to work together to decrease the county carbon emissions. This partnership plays a key role to decarbonise the county.

The Local Authority Climate Policy Group (LACPG) is a group formed by all the Local Authorities in Cumbria, the Lake District National Park and the administrators of the ZCCP. This grouping aims to develop consistent and ambitious policy across Cumbria in order to meet our Net-Zero targets and limit damage to the natural environment.

All the Local Authorities across Cumbria have already produced an action plan, strategy, or other policies to embed change in their respective organisation and district to decrease their carbon footprint and to tackle climate change.

You can access to the different documents in the table below:

|                                 |  |
|---------------------------------|--|
| Allerdale Borough Council       | <a href="#">Appendix A Climate change action plan.pdf (allerdale.gov.uk)</a> |
| Barrow Council                  | <a href="#">Barrow BC - Climate Change</a>                                   |
| Carlisle City Council           | <a href="#">Climate Change   www.carlisle.gov.uk</a>                         |
| Copeland Borough Council        | <a href="#">Climate Action Plan   Copeland Borough Council</a>               |
| South Lakeland District Council | <a href="#">SLDC Climate Change Action Plan (southlakeland.gov.uk)</a>       |

# Zero Carbon Cumbria: The Vision



## For Residents...

- Although there are more visitors, Cumbria feels less crowded
- People are spending less time on roads and exercising more
- Diets are improved and food is sustainably sourced
- Homes are more comfortable to live in and cheaper to run and more resilient to the climate crisis



## For Visitors...

- Cumbria is more beautiful, quieter and cleaner
- It is easier to leave cars behind as bikes are more accessible
- The stunning landscape looks all the more beautiful with more wildlife, trees, less erosion and no pollution in our lakes and rivers

## For Businesses...

- Economy thrives with more jobs, especially in Tourism, Land Management and Green Energy
- Emphasis on the green economy sectors shows that Cumbria is leading the way toward Net Zero and this is encouraging young, educated workers to take up job opportunities in the County
- Plenty of leisure time provides opportunities for employees to live active, healthy outdoors lives and this is a major draw for inward investment

## 4. Eden District's Action Plan

According to the Carbon Baseline for Cumbria, the county generated around 3.18 MtCO<sub>2</sub> in 2017. This includes emissions related to railways and carbon sequestration from land use (peat restoration and tree planting) but excluding all the emissions from the M6 motorway.

On average, a Cumbrian resident emits 12.7 tCO<sub>2</sub> per year which is 35% higher than the national average UK citizen (9.4tCO<sub>2</sub>/year).

Figure 7 shows the improvement required in the tourism industries, consumption of goods and services and energy emissions to achieve the net-zero by 2030 in Cumbria. Land Use, Land Use Change and forestry will play an important role in the absorption of greenhouse gases and in the reduction and negation of our CO<sub>2</sub>e emissions.

**Option 1 - Net Zero by 2030:** 13% annual reduction in energy-only CO<sub>2</sub> emissions; 11% annual reduction in food and other purchased goods emissions; 20% annual reduction in visitor travel per visitor day emissions; 400% increase in annual LULUCF removals after 10 years.

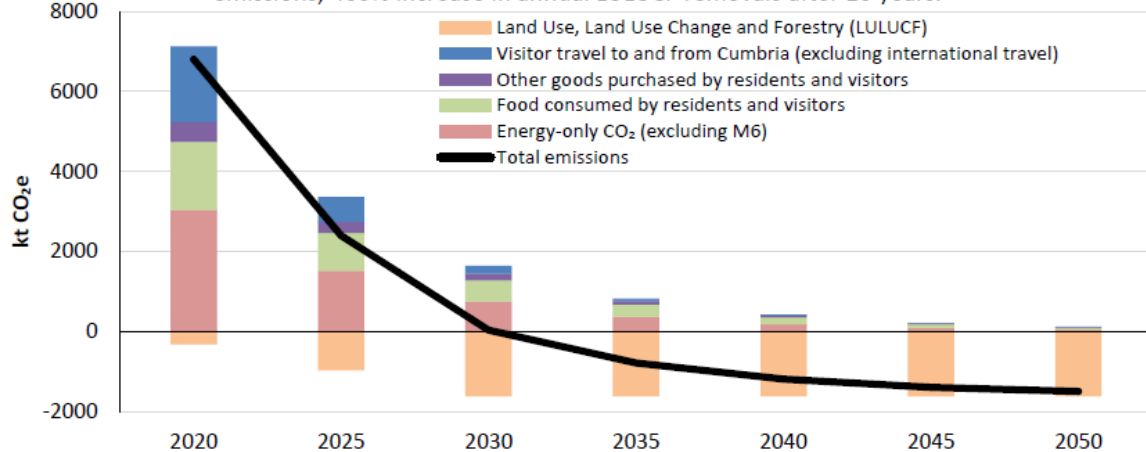


Figure 7, Actions needed to reach net-zero emission by 2030 (Moss J., et al, 2020)

In order to achieve the objective to make Eden District Council and the wider district net zero carbon by 2030, there are significant changes and actions that need to take place across the district to tackle the effects of climate change.

Eden District Council has started to implement several changes to reduce its carbon footprint:

| What has the Council done?  | How have /will the Council achieve this?   |
|---|--|
| Improving the energy efficiency of Eden District Council owned buildings. | Improve the insulation of Council owned buildings in order to reduce our energy usage.                   |
| Reduce emissions related to transport.                                    | Introduce new transport solutions to reduce direct and indirect carbon emissions.                        |
| Introducing better waste management.                                      | Reducing the amount of waste produced and improving recycling across Eden district.                      |
| Making Eden's communities sustainable.                                    | Implementing new green energies and supporting residents and businesses to live in more sustainable way. |
| Protecting and enhancing biodiversity.                                    | Taking actions to improve natural habitat and different ecosystems.                                      |

Eden District Council will also work with others to reduce the overall impact of and on the district

| What will the Council do?                                      | How will the Council achieve it?  |
|--|---|
| Providing a lead and setting an overall “direction of travel”. | Providing a phased action plan with a budget allocation up to 2030.   |
| Taking joint action with partners and organisations.           | Supporting the actions and activities of government, non-government and private group.  |
| Working with businesses in the district.                       | Supporting an audit system and a grant programme to support businesses in making changes that benefit zero carbon and biodiversity. |
| Encouraging and enabling communities to take action.           | Providing information sign posting and support for local people to take positive action on climate change.                          |
| Providing a framework for action for visitors to the region.   | Provide a “visitor charter” to encourage considerate and sustainable tourism.   |
| Making room for Nature.  | Talking small local action in support of habitat and species diversity.   |

#### 4.1 Carbon Reduction and Biodiversity Action Plan – The Context

Eden District Council has ambitions to address the climate and biodiversity emergency with solutions focused on low carbon emissions and biodiversity enhancement.

This action plan is considered as a working document that will be annually reviewed, modified and updated.

#### 4.2 Initial Action Plan

The plan that follows identifies key objectives and the necessary actions to achieve them.

Budgets will be allocated following a prioritisation process, focussing initially on achievable goals and long term projects that will build the impacts over time until 2030.

The plan is designed to be repeated over the period to 2030, and is primarily focused on the first 2 years of activity. The plan will be reviewed and updated annually and with the progress monitored. Feedback from monitoring and assessment of progression towards targets will be used to set subsequent actions, targets and budgets. As technology changes and the global advances towards more sustainable practices become available the plan will evolve.

A wide range of actions will be introduced over time, saving carbon in a multitude of ways; ultimately offsetting and sequestration will be required to balance the 'un-saveable carbon', all plausible savings will be targeted, overall resulting in a below net zero carbon balance.

For clarity the following Plan is split into 6 key themes:

- 1) Our Assets and Energy
- 2) Sustainable Transport
- 3) Waste
- 4) Support
- 5) Community Engagement and Publicity
- 6) Land Use

### 4.3 Our Asset and Energy

| Our Assets and Energy  |   |   |                             |                     |
|--|---|---|-----------------------------|---------------------|
| 2021-2023 Objectives   | Associated Actions  | Measurement/ Target   | Internal or External Action | Corporate Objective |
| Reduce carbon emissions and improve environment / sustainability of Council's Properties | <p>Retrofit Voreda House to Passivhaus standard</p> <ul style="list-style-type: none"> <li>- Replacing windows</li> <li>- Wrapping buildings</li> <li>- Natural ventilation system</li> </ul> <p>Improve energy management practises in Town Hall and Mansion House</p> | <p>Implement the new Pilio tool to measure the energy usage of EDC buildings to explore opportunities to reduce energy consumption and carbon emissions.</p> <p>Use the same tool to determine the energy, carbon and financial savings of Voreda.</p> <p>Action feasible when officers will move and start working in Voreda house (by the end of 2023).</p> | Internal                    | Sustainable         |

| Our Assets and Energy   |   |   |                             |                     |
|---|---|---|-----------------------------|---------------------|
| 2021-2023 Objectives  | Associated Actions  | Measurement/ Target   | Internal or External Action | Corporate Objective |
| Carbon Management Plan - EDC buildings*                             | Assess the carbon footprint of each building owned / managed by EDC and identify measures to reduce their carbon emissions. | <p>Finished to complete the carbon management plan document and assess the potential retrofit / improvement that could be made in each EDC buildings to reduce our carbon footprint (end of 2022).</p> <p>Find some funding to retrofit / improve / change our building to reduce our energy consumption. (Ongoing action).</p> <p>Reduce by 10% our energy usage every year until reaching the minimum achievable.</p> | Internal                    | Sustainable         |
| Increase staff awareness of carbon impacts and low carbon solutions | Provide accredited Carbon Literacy Training to staff  | 60% of the EDC staff and members should be carbon literacy trained by the end of 2022.  | Internal                    | Sustainable         |



#### 4.4 Sustainable Transport

| Sustainable Transport                           |  |  |                             |  |
|---|--|--|-----------------------------|--|
| 2021-2023 Objectives                            | Associated Actions   | Measurement/Target   | Internal or External Action | Corporate Objective                              |
| Encourage the use of electric vehicles for work | <p>Introduce electric car charge points in the staff car parks</p> <p>Introduce electric pool cars or introduce electric car incentive</p> | <p>Install 2 charging points in EDC parking for staff by the end of 2022</p> <p>Change our EDC vans for Electric vans by the beginning of 2024.</p> <p>Implementation of electric car incentive by the end of 2023</p> | Internal                    | Connected / Sustainable/ Healthy Safe and Secure |
| Reduce amount of Employee Travel                | Continue to develop digital connectivity and skills to ensure service continuity and encourage home working                                | <p>Encourage officers of EDC to car share to come to work by the beginning of 2022.</p> <p>Target of 75% of workforce to work all or part of their week remotely</p>   | Internal                    | Connected  |
| Reduce amount of Member Travel                  | Use of virtual meetings where consistent with legal and constitutional requirements  | Already in place due to covid19  | Internal                    | Connected  |

| <b>Sustainable Transport</b>  |  |   |                                    |                                      |
|---|--|---|------------------------------------|--------------------------------------|
| <b>2021-2023 Objectives</b>   | <b>Associated Actions</b>  | <b>Measurement/Target</b>   | <b>Internal or External Action</b> | <b>Corporate Objective</b>           |
| Encourage active travel for Employees and Members.  | Promote the Council's cycle scheme.<br>Improve office facilities to accommodate cyclists/walkers/runners.  | Target of 30% of officers to apply for the Cycle Scheme by the beginning of 2023.<br>Inclusion of 2 changing areas with showers in Voreda House.  | Internal                           | Connected / Healthy, Safe & Secure   |
| Improve online accessibility to council services for customers to minimise required travelling to Council officers. | Continue to develop online platform My Account to provide more council services remotely.<br>Continue work on improving accessibility of online forms.             | Number of My Account registrations each quarter (This is already measured as part of Corporate Performance).<br>Target of 50% Forms by the end of Strategy Period changed from paper to online. | Internal                           | Connected                            |
| Encourage increased cycling in the district through improved facilities and support.                                | Work with Cumbria County Council to review County Cycling Strategy.<br>Assessment of needs for active transport provision in other towns (in addition to Penrith). | Eden District Council is working with external organisations and Cumbria County Council to improve and implement new cycling routes to encourage residents to active travel.                    | External                           | Connected/ Healthy, Safe and Secure. |

## 4.5 Waste

| Waste   |   |   |                             |                     |
|---|---|---|-----------------------------|---------------------|
| 2021-2023 Objectives                                    | Associated Actions  | Measurement/Target  | Internal or External Action | Corporate Objective |
| Minimise the Council's Office Related waste production. | <p>Reduce paper printing cross departmentally by the inclusion of more paper recycling bins throughout Departments.</p> <p>Continue recycling redundant IT equipment, and find ways to recycling/reusing other equipment.</p> | <p>Introduction of 10 paper Recycling Bins for officer in each EDC buildings by the beginning of 2022.</p> <p>Setting up recycling bins (e.g. tins, glass) in all communal kitchens by the beginning of 2022.</p> <p>Counting number of recycled pieces of IT equipment and recycle the maximum as possible or resale equipment still working (circular economy).</p> | Internal                    | Sustainable         |
| Increase the emphasis of Sustainability in procurement. | <p>Introduce sustainability into our next update of the Council's Procurement Strategy.</p> <p>Review Procurement Templates to include sustainability in tenders and contracts.</p>   | <p><i>New Procurement Strategy adopted by the end of 2023.</i></p> <p>Implement sustainability into procurement strategy by the beginning of 2022.</p>  | Internal                    | Sustainable         |

| <b>Waste</b>  |   |  |                                    |                            |
|---|---|--|------------------------------------|----------------------------|
| <b>2021-2023 Objectives</b>   | <b>Associated Actions</b>   | <b>Measurement/Target</b>  | <b>Internal or External Action</b> | <b>Corporate Objective</b> |
| Support Initiatives that preserve resources, minimise waste and promote circular economy. | Continue to work with Cumbria Strategic Waste Partnership.<br>Support organisations working with businesses to promote waste reduction and low carbon technologies. | Explore ways to promote waste reduction, low carbon technology and circular economy with businesses in Eden. | External                           | Sustainable / Creative     |

## 4.6 Support

| Support   |  |   |                             |                         |
|---|--|---|-----------------------------|-------------------------|
| 2021-2023 Objectives  | Associated Actions   | Measurement/Target  | Internal or External Action | Corporate Objective     |
| <b>Improve the environmental sustainability of local businesses</b> | <p>Through Greening Eden Businesses programme provide specialist advice and grants to businesses on measures to reduce both costs and carbon emissions.</p> <p>Establish a web portal for businesses to match supply needs with other sustainable, local businesses.</p> | <p>30 Eden business carbon audited by CBEN by the end of 2022.</p> <p>15 grants to be awarded by the end of 2022.</p> | Internal                    | Sustainable / Creative  |
| <b>Support communities to develop low carbon projects</b>           | Establish community support schemes to help residents develop low carbon projects.   | 20 parishes sign up to the Greening Campaign by the end of 2022.  | Internal                    | Sustainable / Connected |

| Support   |  |   |                             |  |
|---|--|---|-----------------------------|--|
| 2021-2023 Objectives  | Associated Actions   | Measurement/Target  | Internal or External Action | Corporate Objective  |
| <b>Reduce levels of fuel poverty and improve energy efficiency of dwellings</b> | <p>Continue through the affordable warmth partnership to address fuel poverty.</p> <p>Using Green Homes Grant to improve energy efficiency of low income, low efficiency households in the district.</p> | <p>Accessing up to date Fuel Poverty Statistics when available.</p> <p>Analyse data to estimate how much carbon emissions have been saved through at the end of this grant.</p> <p>No. of Improvement Measures carried out via Green Homes Grant projects (Phase 1A, 1B and 2).</p> | Internal                    | Sustainable/<br>Healthy<br>Safe and<br>Secure /<br>Housing |

#### 4.7 Community Engagement and Publicity

| Community Engagement and Publicity   |   |  |                             |                                       |
|--|---|--|-----------------------------|---------------------------------------|
| 2021-2023 Objectives   | Associated Actions  | Measurement/Target   | Internal or External Action | Corporate Objective                   |
| <b>Promotion of low carbon communities amongst Parishes</b>                      | <p>Engage with Parish Councils about community actions that will support the delivery of the vision, including commissioning specialist support work with parishes to use the carbon calculator to develop projects. Establish a fund to support project delivery.</p> <p>Develop (fund) projects with community such as community energy, greening development, community resilience, circular economy, etc.</p> | <p>20 parishes to sign up to the Greening Campaign by the end of 2022.</p> <p>£15,000 allocated to community for green projects by the beginning of 2023.</p> <p>Launch of the new COP26 community funding grant to engage with community to develop green projects that will have a significant impact of carbon emissions and that will benefit the community.</p> | Internal                    | Sustainable, Healthy Safe and Secure  |
| <b>Establish communication campaign to inform residents about sustainability</b> | Engage with the wider public over possible and desirable actions individuals could take to reduce their environmental impact.   | Continue to engage with Parishes through the Greening Campaign to reach 50% of participation by the end of 2023.   | Internal                    | Sustainable, Healthy, Safe and Secure |

## 4.8 Land Use

| Land Use  |  |   |                             |                     |
|---|--|---|-----------------------------|---------------------|
| 2021-2023 Objectives  | Associated Actions   | Measurement/Target  | Internal or External Action | Corporate Objective |
| <b>Balance carbon footprint through carbon sequestration projects</b>                         | Identify areas of EDC land for carbon sequestration.   | Assessment for carbon footprint sequestration potential of all the lands owned by EDC by mid-2022 to explore any potential for offsetting projects.   | Internal                    | Sustainable         |
| <b>Cooperate and coordinate with external bodies to support biodiversity and conservation</b> | Upland, moorland and heath management in partnerships.<br>Increase woodland coverage working with landowners, community groups, volunteers and other partners. | Establish good partnerships with external organisations to promote and enhance biodiversity and natural habitat across Eden by the beginning of 2023. | External                    | Sustainable         |



## 5. Biodiversity

### 5.1 Introduction

The term biodiversity is define as:

“The variability among living organisms from all sources including, inter alia, terrestrial, marine and other aquatic ecosystems and the ecological complexes of which they are part; this includes diversity within species, between species and of ecosystems ”<sup>9</sup>

The world is witnessing a severe decline in the worldwide biodiversity. Since 1970, the mammals, birds, amphibians, reptiles and fish populations has decreased by 68%.<sup>10</sup> The United Kingdom is one of the most nature depleted countries in Europe, with 15 % of UK species threatened with extinction. <sup>11</sup>

In acknowledgement of the pressures facing by our wildlife and natural habitats both locally and internationally, Eden District Council declared a biodiversity emergency in July 2019.

The biodiversity emergency requires all the different Council services to consider their impact on biodiversity and the ecosystems in their operations.

### 5.2 Biodiversity in context

An environment full of biodiversity is essential for supporting human life. In the recent years more and more documented examples of economic and environmental benefits have been demonstrate for the human being to take in consideration the natural environment and to work and live alongside nature.

Due to a constant growing population, the demand for food and energy production keep increasing, leading to a degradation, fragmentation and loss of natural habitats. With a constant decrease in the species diversity and the degradation of the ecosystems, the nature productivity, resilience and adaptability is at risk of long term damage or to collapse.

Nature also plays a significant role to reduce the effect of climate change. From the top of the mountains to the bottom of the seas, there are various natural processes that sequestrate carbon naturally. The degradation of natural habitats would hinder these processes and then accentuate the effect of Climate Change.

---

<sup>9</sup>CBD, 1992. Convention on Biological Diversity. Available at: <http://www.cbd.int/convention/articles/default.shtml?a=cbd-02> [Accessed May 13, 2013].

<sup>10</sup> Biodiversity in the UK: bloom or bust? (parliament.uk)

<sup>11</sup> UK has 'led the world' in destroying the natural environment | Natural History Museum (nhm.ac.uk)

### 5.3 Legislation and policy

To protect and enhance Eden's biodiversity, this strategy has taken into consideration the different range of national, regional and local policies to ensure the interrelation of this document with wider strategic initiatives.

#### **National Legislation:**

- The Wildlife and Countryside Act 1981
- The Countryside and Rights of Way (CROW) Act 2000
- Natural Environment and Rural Communities (NERC) Act 2006
- The Conservation of Habitats and Species Regulations 2019 (EU Exit)
- Environment Bill 2019-2021

#### **National, regional and local Policy documents:**

- UK Post-2010 Biodiversity Framework
- Biodiversity 2020: A strategy for England's wildlife and ecosystem services
- Local Nature Partnerships (LNPs)
- Eden District Local Plan

#### **Plans and policy drivers:**

- Natural England Nature Networks
- 25 Year Environment Plan 2018
- Dasgupta Review 2021

### 5.4 Eden District Council's role

Eden District Council's biodiversity strategy is a plan of actions to ensure that the fauna, flora and ecosystems are preserved, protected and enhanced and that progress is tracked through measurable targets.

The Biodiversity Strategy sets out the ambitions of Eden District Council for the next 9 years. It provides a framework and set objectives for improving biodiversity across the Eden district and highlighting the organisation's role.

This strategy defines Eden District Council work directions both internally and externally through partnership with external organisations and will sit in conjunction with other important policies for sustainability in Eden.

The strategy will enable Eden District Council to actively fulfil its role to preserve and enhance biodiversity under the Natural Environment and Rural Communities (NERC) Act 2006<sup>12</sup> and its statutory obligations under the Conservation of Habitats and Species Regulations 2017<sup>13</sup>, by taking a collective approach to protect natural habitats.

---

<sup>12</sup> [Natural Environment and Rural Communities Act 2006 \(legislation.gov.uk\)](https://www.legislation.gov.uk/ukpga/2006/42)

<sup>13</sup> [The Conservation of Habitats and Species Regulations 2017 \(legislation.gov.uk\)](https://www.legislation.gov.uk/ukreg/2017/116)

To develop and deliver more successful actions to improve land for biodiversity and bring awareness about biodiversity, Eden District Council recognised the importance of establishing strong internal and external partnerships.

## 5.5 Our vision

Our ambition is to put biodiversity at the front of everything that we do. Over the next ten years period the Council want to develop more opportunities for collaboration, to work in partnership with residents, businesses and other external organisations upon existing strategies related to climate change and biodiversity to achieve this goal.

Our vision is to promote a vibrant, biodiversity rich and thriving natural habitat throughout our landscape.

To achieve this Eden District Council will take action to:

- stop habitat loss
- halt species loss
- Establish a good management of existing habitats
- Create and redevelop opportunities for key indicator species
- Control and manage invasive species and disease in the local fauna and flora

## 5.6 Biodiversity Net Gain.

To protect and enhance the biodiversity throughout our landscape, this document introduces a concept of Biodiversity Net Gain (BNG). This concept has been developed to ensure that every new development will improve the natural habitats and protect wildlife, plants and ecosystems. BNG requires a 10 % increase in biodiversity after development compared to the level of biodiversity before the development. This concept has been nationally mandated for all Local Planning Authorities<sup>14</sup>.

Biodiversity Net Gain is define as:

*“Development that leaves biodiversity in a better state than before, and an approach whereby developers work with stakeholders to support their priorities for nature conservation.”*

Eden District Council set an aspiration for the district to add the concept of Biodiversity Net Gain into our Local Plan by 2023.

## 5.7 BNG Methodology:

In preparation to implement the Biodiversity Net Gain, it is important to establish a baseline taking into account the types of habitats and their state for the key natural habitats own and managed by the Council.

This process will help to plan and monitor management and enhancement to deliver measurable and to assess the Biodiversity Net Gain.

Eden District Council will explore opportunities to work with Government bodies and external organisations to develop or use a tool suitable for Eden’s landscape and

---

<sup>14</sup> [Net gain: summary of responses and government response \(publishing.service.gov.uk\)](https://publishing.service.gov.uk)

biodiversity. (A Biodiversity Metric tool has already been developed by Natural England in Partnership with DEFRA). This tool will provide support to developers, planners and land managers to measure the value of the biodiversity under their authority. It will use the size, types and condition of habitats as a proxy for this importance and value for nature.

### **5.8 Priority habitats and species**

The choice of natural habitats and species for action across Eden district is based upon strong ecological principles, database and studies from national and regional guidance, such as natural habitats for which the United Kingdom has some international obligations<sup>15</sup>.

(Eg Conservation of Habitats and Species Regulations 2017, Bern Convention, Oslo and Paris Convention “OSPAR”, Boon and Ramsar Conventions).

### **5.9 Priorities habitats**

56 habitats of principal importance are included in the S41 list (NERC Act 2006 – Section 41). These habitats in England were identified as requiring action in the UK Biodiversity Action Plan <sup>16</sup> and continue to be regarded as conservation priorities in the UK Post 2010 Biodiversity Framework<sup>17</sup>.

Eden District Council considers all natural and semi natural habitats important in the district Landscape but some habitats required a more particular attention due to their importance nationally and internationally.

In Eden the key priorities habitats are (but not exclusive to):

---

<sup>15</sup> [https://www.legislation.gov.uk/ukpga/2006/16/pdfs/ukpga\\_20060016\\_en.pdf](https://www.legislation.gov.uk/ukpga/2006/16/pdfs/ukpga_20060016_en.pdf)

<sup>16</sup> [Biodiversity: the UK action plan - GOV.UK \(www.gov.uk\)](http://www.gov.uk)

<sup>17</sup> [UK Post-2010 Biodiversity Framework \(jncc.gov.uk\)](http://jncc.gov.uk)

# THE KEY HABITAT PRIORITIES

## GRASSLAND HABITATS



- Calaminarian (metal rich soils)
- Calcareous
- Hay Meadows and Pastures
- Lowland Dry Acid Grasslands.

## UPLAND HABITATS

- Bogs
- Heathland
- Montane Habitats



## WETLAND HABITATS



- Bogs
- Fen, Marsh, Swamp
- Rivers
- Lakes, Ponds, Tarns

## WOODLAND AND SIMILAR HABITATS

- Hedgerows
- Semi-natural Woodland
- Traditional Orchards
- Wood Pastures and Parkland



## OTHER PRIORITY HABITATS



- Open mosaic on Brownfield Sites
- Rock Habitats

## 5.10 Priorities Species

943 species of principal importance are included on the S41 list. These species are found in England and were identified as requiring action under the UK BAP <sup>19</sup>and which continue to be considered as conservation priorities under the UK post -2012 Biodiversity Framework<sup>20</sup>.

Eden District Council considers all species important as they are part of ecosystems and natural cycles. In Eden, numerous native species population are in decline. The species of particular national importance found in the Eden district are (but not exclusive to):

---

<sup>18</sup> <https://www.cbdc.org.uk/data-services/cumbria-biodiversity-evidence-base/habitat-statements/>

<sup>19</sup> <https://data.jncc.gov.uk/data/cb0ef1c9-2325-4d17-9f87-a5c84fe400bd/UKBAP-BiodiversityActionPlan-1994.pdf>

<sup>20</sup> <https://data.jncc.gov.uk/data/587024ff-864f-4d1d-a669-f38cb448abdc/UK-Post2010-Biodiversity-Framework-2012.pdf>

# THE KEY SPECIES PRIORITIES



**BARN OWL**

**BATS**



**GREAT CRESTED  
NEWTS**

**HEN HARRIER**



**OTTER**

**RED SQUIRREL**



**REPTILES (ALL  
NATIVE SPECIES)**

**SMALL BLUE  
BUTTERFLY**



**WINTER VOLE**

**WINTERING  
GEESE & SWANS**



21

<sup>21</sup> <https://www.cbdc.org.uk/data-services/cumbria-biodiversity-evidence-base/species-statements/>

## 6. Biodiversity Objectives and Action Plan

| Land Use / Biodiversity                            |   |  |                             |                     |
|--|---|--|-----------------------------|---------------------|
| 2021-2023 Objectives                               | Associated Actions  | Measurement/Target   | Internal or External Action | Corporate Objective |
| <b>Established a biodiversity baseline in Eden</b> | Assess the state of the biodiversity across Eden district to implement a better management and enhance the habitats at risks.   | Established a baseline and map on priority lands and priority species by the end of 2022.  | Internal / External         | Sustainable         |
| <b>Manage our land sustainably</b>                 | <p>Assess areas of council land suitable for biodiversity enhancement.</p> <p>Plant trees and wildflowers on council lands.</p> <p>Increase the collaborative action with Cumbria Wildlife Trust and Cumbria County Council over road side verges, waste land and management of green spaces across Eden.</p> | <p>Assessment of all the lands own by EDC suitable for biodiversity by the end of 2022.</p> <p>Plant trees on French Field and Carleton Park by the end of 2022.</p> <p>10 successful wildflower beds and tree Planting projects by the end of 2023.</p> <p>Develop relationship and project with Cumbria Wildlife Trust and CCC by the end of 2022.</p> | Internal                    | Sustainable         |



| <b>Land Use / Biodiversity</b>   |  |  |                                    |                            |
|--|--|--|------------------------------------|----------------------------|
| <b>2021-2023 Objectives</b>  | <b>Associated Actions</b>  | <b>Measurement/Target</b>  | <b>Internal or External Action</b> | <b>Corporate Objective</b> |
| <b>Assess the ecological impacts of all council decisions and actions</b>  | Ensuring climate change and ecological impact assessment in all decision making.   | Creation of Climate Change and Ecological Impact Assessment Template and adoption across all Council Departments by the end of 2023.<br><br>Regular report to committee and full council.            | Internal                           | Sustainable/<br>Creative   |
| <b>Create a Biodiversity Information Campaign</b>                          | Publish a strategic document and activity plan. Initiate a Climate Champions group that will also look at Biodiversity issues. | Publish a strategic document and activity plan on biodiversity across Eden by the end of 2021.<br><br>Engage with climate champions about biodiversity.  | Internal                           | Sustainable/<br>Creative   |
| <b>Support communities, partners and stakeholders on green initiatives</b> | Work with community to support initiatives that promote the recovery of priority habitats.                                     | Issue SLA to 5 organisations, CWT, ERT, FoLD, CAFS & The Farmer Network to deliver activity in sustainability and biodiversity on EDC's behalf.<br><br>Develop partnerships and schemes by mid-2022. | External                           | Sustainable                |

| Land Use / Biodiversity  |   |   |                             |                                  |
|--|---|---|-----------------------------|----------------------------------|
| 2021-2023 Objectives   | Associated Actions  | Measurement/Target  | Internal or External Action | Corporate Objective              |
| <b>Support farming networks to promote biodiversity</b>        | Help farmer to assess the carbon footprint of their farms and activities and find solution to help them reduce them.                | Launch and support a pilot Farm Carbon auditing scheme (beginning of 2022).   | Internal / External         | Sustainable                      |
| <b>Incorporate the Biodiversity Net Gain in our local Plan</b> | Integrate the concept of Biodiversity Net Gain and promote the right Biodiversity Metric tool to start enhance Eden's biodiversity. | Incorporate the concept of Biodiversity Net Gain into our local plan and policies by the beginning of 2023.<br><br>Start promoting a Biodiversity Metric tool for developers, land owners and planners. | Internal / External         | Sustainable / Policies/ planning |

## **7. Monitoring progress**

In order to continue toward our objective to be net-zero by 2030, the different actions composing this action plan will be measured via methods shown in the Zero Carbon and Biodiversity Action Plan and will be monitored quarterly as part of the corporate performance monitoring system.



# Corporate Priorities- Zero Carbon Strategy and Biodiversity Generated on: 29 April 2022

| C Zero Carbon Strategy  |  |                  |              | Sustainable |   |          |  |
|---|--|------------------|--------------|-------------|---|----------|--|
| Deliver the Zero Carbon Eden District Council Strategy & Action Plan 2020-2023, making progress on reducing the Council's carbon footprint to zero by 2030, by improving energy use and biodiversity in EDC estate, promoting community projects in district e.g. community energy schemes. |  |                  |              |             |   |          |  |
| Ref:  | Milestone  | Portfolio Holder | Lead Officer | Target      | Progress  | Risk Rag | Progress in previous Quarter- specify blockages/challenges/achievements  |
| C1  | Final strategy and action plan agreed by Executive   | Mark Rudhall     | Laura Cadman | 30-Sep-2021 | <div style="width: 100%;"><div style="width: 100%;"></div></div> 100% |          | Q2 Update: Final comments from members have been sent on the 15th of October 2021 (deadline). Document to be revised in line with final comments received. Next step: A discussion needs to take place to decide the final direction of the ZC&B Strategy.   |
| C2  | Provide accredited Carbon Literacy Training to staff and Members   |                  | Laura Cadman | 31-Mar-2022 | <div style="width: 100%;"><div style="width: 100%;"></div></div> 100% |          | Carbon Literacy training is being run again in May and June. The training has also been added to the Corporate Training Schedule. % of staff and members trained will be reported through the KPI's in future.   |
| C3  | Identify individually the carbon footprint of each buildings own / managed by EDC and try to find mitigation and adaptation scenario to reduce their carbon emissions                          |                  | Laura Cadman | 03-Apr-2023 | <div style="width: 65%;"><div style="width: 65%;"></div></div> 65%    |          | Q4 Update: All the energy and water data from April 2018 have been implemented in Pilio. The Sustainability Team has been engaged with NW energy Hub to get their support to finalised as carbon management plan.  |
| C5  | Work with other partners in the EV Infrastructure Install Group, as part of the "One Public Estate", to identify and prioritise key locations for install within the District and County wide. |                  | Laura Cadman | 01-Apr-2023 | <div style="width: 25%;"><div style="width: 25%;"></div></div> 25%    |          | <p>29 04 22- Current position is:</p> <ul style="list-style-type: none"> <li>120 locations were initially identified and have been mapped, however other sites need further exploration before deciding whether to submit a bid at this stage.</li> <li>ORCS Funding (On-Street Residential Chargepoint Scheme) could be applied for however the maximum bid is £100K. It is anticipated that this fund may only be available over the next 12 months and will be replaced by LEVI funding (Local Electric Vehicle Infrastructure), which currently has £400 million Resource funding and a further £50 million Capital Funding.</li> <li>Cumbria County Council have carried out an assessment for a Project manager role to drive this forward. It is anticipated that the salary banding for this role would be in the region £32k-£35k, with a FTC position being available until April 2023. Funding for the role needs further investigation and donations may be sought from each partner in the group, including EDC.</li> </ul> |

# Corporate Priorities- Zero Carbon Strategy and Biodiversity Generated on: 29 April 2022






| D Biodiversity   |   |                  |              | Sustainable |   |          |   |
|--|---|------------------|--------------|-------------|---|----------|---|
| Manage our own land sustainably, collaborate with external bodies, develop and deliver integrated protection and enhancement of natural habitats within Eden ecosystems. |   |                  |              |             |   |          |   |
| Ref:   | Milestone   | Portfolio Holder | Lead Officer | Target      | Progress  | Risk Rag | Progress in previous Quarter- specify blockages/challenges/achievements   |
| D1   | Assess council owned land for suitability for biodiversity enhancement  | Mark Rudhall     | Laura Cadman | 30-Sep-2022 | <div style="width: 40%;"><div style="background-color: #4F81BD; height: 10px;"></div></div> 40% |          | <p>Q4 Update: The Sustainability Team has produced a visual assessment of the land owned by EDC to determine which land could show a ecological potential.</p> <p>All the description of the land have been implemented in the Land Terrier in GIS.</p> <p>The lands needs now to be shared with Cumbria Wildlife Trust for their expertise and their landscape, biodiversity and habitat assessment.</p> <p>Further discussion need to be made with Eden River Trust and Cumbria Wildlife Trust about projects such as :</p> <ul style="list-style-type: none"> <li>- Planting for pollinators</li> <li>-Planting trees</li> </ul> |
| D2   | Identify key partners for appropriate SLA's in relation to the recovery of priority habitats (uplands, woodland, meadow and wetlands.   |                  | Laura Cadman | 30-Sep-2022 | <div style="width: 25%;"><div style="background-color: #4F81BD; height: 10px;"></div></div> 25% |          | <p>Q4 Update: The Sustainability Team has received the Service Level Agreement from the legal team. CCP and LC needs to review the terms of the Service Level Agreements with the different external organizations. At the moment, only Eden River Trust and The Farmer Network has agreed to work with EDC.</p> <p>The Sustainability team is hoping to start the SLA with ERT and TFN begging of April. In the meantime, we have contacted the AONB to see with them if they would be interested to work with EDC.</p>  |
| D4   | Increase positive management and protect existing woodland and treescapes (incl Veteran Trees, hedges etc.). Build partnerships with Cumbria Woodlands, Woodland Trust & private landowners |                  | Laura Cadman | 30-Sep-2022 | <div style="width: 5%;"><div style="background-color: #4F81BD; height: 10px;"></div></div> 5%   |          | <p>Q4 update: The Sustainability Team has assess visual the different type of land owned by EDC. Following some discussion the lands with ecological potential would be send to Cumbria Wildlife Trust for an landscape, biodiversity and habitat assessment.</p> <p>CCP is also exploring the possibility to gather the TFN, NFU and</p>   |

## Corporate Priorities- Zero Carbon Strategy and Biodiversity Generated on: 29 April 2022

|    |  |              |             |   |   |   |
|----|--|--------------|-------------|---|---|---|
|    |  |              |             |   |   | other external organizations to discuss about ways to work together to improve the ecological potential of the land use across the Eden District.   |
| D6 | Promote Farming, and the benefits ecosystem service delivery of public goods through government schemes and NFU, CLBA, Farm Tenant Association, UoC, Westmorland Agricultural Society and The Farmer Network | Laura Cadman | 31-Mar-2023 | <div style="width: 25%;"><div style="background-color: #4F81BD; height: 10px;"></div></div> 25% |  | <p>Q4 Update: The Sustainability team has received the SLA from legal. CCP needs to have meeting with the farmer network to confirm together the term and condition of the SLA. The Sustainability Team is hoping to start working with TFN beginning of April.</p> <p>The Sustainability Team has established a first contact with the AONB to explore the opportunity to work together on farming and land use.</p> <p>CCP is planning to organise an initial conversation with TFN,NFU and others organisations to explore opportunities to work together.</p> |
| D7 | Increase the funding available to support communities, Parish and Town Councils to accelerate local implementation of zero carbon and biodiversity schemes.  | Laura Cadman | 01-Apr-2023 | <div style="width: 60%;"><div style="background-color: #4F81BD; height: 10px;"></div></div> 60% |  | <p>Q4 update: The COP26 community fund has been launched in January. The sustainability team is working on the final draft of the guidance and application forms to share them with community groups.</p>   |

## Sustainability Actions Report- Actions as per Zero Carbon Strategy (Sustainability Portal) **Generated on: 29 April 2022**

### ZC1 Zero Carbon Theme 1- EDC Assets and Energy- Actions outlined in Zero Carbon Strategy under ' EDC Assets and Energy Theme'

| Ref:             | Milestone   | Assigned To    | Target      | Progress  | Risk Rag  | Progress in previous Quarter- specify blockages/challenges/achievements  |
|------------------|---|----------------|-------------|---|---|--|
| ZC1<br>AE1<br>.1 | Implementation of new Pilio tool to measure energy usage of EDC buildings and explore opportunities to reduce consumption and carbon emissions. | Rachael Butler | 01-Apr-2023 | <div style="width: 50%;"><div style="background-color: #4F81BD; height: 10px;"></div></div> 50% |  | Q4 update: The Pilio software has been procured by EDC in September 2021. All the energy usage since April 2018 for our buildings have been implemented in the software. The sustainability team is working on a carbon management plan to find solutions to reduce our energy usage and carbon emissions.   |
| ZC1<br>AE1<br>.2 | Use of Pilio to determine the energy, carbon and financial savings of Voreda House (following Retrofit works to Passivhaus Standard)            | Rachael Butler | 01-Apr-2023 | <div style="width: 0%;"><div style="background-color: #4F81BD; height: 10px;"></div></div> 0%   |  | Q4 Update: The most recent energy usage data from Voreda house has been implemented in Pilio. The sustainability team needs to find previous bills for energy usage and wait until the completion of the project to assess the difference.   |
| ZC1<br>AE2<br>.1 | Completion of the Carbon Management Plan Document (following carbon footprint assessment of each EDC owned/managed by building).                | Rachael Butler | 31-Dec-2022 | <div style="width: 30%;"><div style="background-color: #4F81BD; height: 10px;"></div></div> 30% |  | Q4 Update: The sustainability team has been working with energy NW hub to establish a carbon management plan. A lot of data has been implemented into an excel document designed by Dr John Hindley to help understanding the best solution to reduce our carbon emissions. The sustainability team is now reviewing the data previously implemented in the excel document with the data from Pllio. The discussions with energy NW hub are still going. |
| ZC1<br>AE2<br>.2 | Research possible retrofit/ improvement funding to reduce Energy Consumption of EDC buildings.  | Rachael Butler | 01-Apr-2023 | <div style="width: 30%;"><div style="background-color: #4F81BD; height: 10px;"></div></div> 30% |  | Q4 update: please see actions AE2.1 for more details   |
| ZC1<br>AE3<br>.1 | Provide accredited Carbon Literacy Training to Staff  | Ellie Hill     | 01-Apr-2023 | <div style="width: 25%;"><div style="background-color: #4F81BD; height: 10px;"></div></div> 25% |  | Q4 update: 24% of officers have attended to a Carbon Literacy Training, but only 14% have sent their pledge back and have received their certificate. The sustainability team is chasing officers that need to send their pledge back. 2 more cohorts have been organised in May and June.   |

## Sustainability Actions Report- Actions as per Zero Carbon Strategy (Sustainability Portal) Generated on: 29 April 2022

### ZC2 Zero Carbon Theme 2- Sustainable Transport- Actions outlined in Zero Carbon Strategy under 'Sustainable Transport Theme'

| Ref:       | Milestone   | Assigned To | Target      | Progress | Risk Rag | Progress in previous Quarter- specify blockages/challenges/achievements  |
|------------|---|-------------|-------------|----------|----------|--|
| ZC2 ST1 .1 | Installation of 2 Charging Points in EDC parking for staff.   | Ellie Hill  | 31-Dec-2022 | 0%       |          | Q4 update: The sustainability team is getting in contact with different EV chargers organisations to assess the feasibility to install charging point in Town Hall car park and Voreda House car park for officers and members.  |
| ZC2 ST1 .2 | Change current EDC vans to Electric.  | Ellie Hill  | 01-Apr-2023 | 20%      |          | Q4 Update: The sustainability team has worked with the Energy Saving Trust to produce a Fleet report and to show the different possibilities to change our vans for EV vans. After discussion with community services, they have decided that it would not be suitable with the work of the Environmental Enforcement Officer.                                   |
| ZC2 ST1 .3 | Implementation of Electric Car Incentive  | Ellie Hill  | 01-Apr-2023 | 10%      |          | Q4 update: The sustainability team is part of different groups to implement more EV chargers and to look into EV car pooling in the Eden District. Depending of the outcome of the discussion and the feasibility of the different projects, the sustainability team will assess the different options and work towards a EV strategy for Eden District Council. |
| ZC2 ST2 .1 | Encourage Officers of EDC to Car Share when travelling to and from work and promote/facilitate home working   | Ellie Hill  | 31-Dec-2022 | 0%       |          | Q4 update: The sustainability team is going to start exploring ways to implement a car sharing system with officers. Nothing has been previously done due to the pandemic context and the government instructions related to COVID-19.   |
| ZC2 ST2 .2 | Promotion of Council's Cycle Scheme   | Ellie Hill  | 01-Apr-2023 | 10%      |          | Q4 update: The cycle scheme is available for officers at Eden District Council. The sustainability team needs to get data about how many officers has showed an interest in the scheme and to promote it with the communication department.  |
| ZC2 ST2 .3 | Inclusion of 2 changing areas with showers in Voreda House  | Ellie Hill  | 01-Apr-2023 | 25%      |          | Q4 update: The sustainability team is not involve in the internal design of Voreda House. The recommendation has been made to Paul Brundson (before he left) to include changing rooms and showers for officers that wish to come to work running or cycling.  |
| ZC2 ST4 .1 | Work with Cumbria County Council (and other external organisations) to review Cycling Strategy and implement new cycling routes throughout the District | Ellie Hill  | 01-Apr-2023 | 25%      |          | Q4 update: The sustainability team has been involved in the Cycling and Walking in Cumbria scheme. The second round of consultation happened in February for Penrith.  |



## Sustainability Actions Report- Actions as per Zero Carbon Strategy (Sustainability Portal) Generated on: 29 April 2022

### ZC3 Zero Carbon Theme 3- Waste- Actions outlined in Zero Carbon Strategy under 'Waste Theme'

| Ref:     | Milestone   | Assigned To    | Target      | Progress   | Risk Rag | Progress in previous Quarter- specify blockages/challenges/achievements   |
|----------|---|----------------|-------------|--|----------|---|
| ZC3 W2.1 | Introduction of Sustainability into new Procurement Strategy and review of Procurement Templates to include Sustainability in tenders and contracts | Rachael Butler | 01-Apr-2023 | <div style="width: 20%;"><div style="width: 20%;"></div></div> 20% |          | Q4 update: The sustainability team has been working with the procurement team to add more sustainability in our tender process. We are now looking at the TOMs frameworks and other procurement strategies from others Councils to find ways to implement more sustainability into our procurement. |
| ZC3 W3.1 | Explore ways to promote waste reduction, low carbon technology and circular economy with businesses in Eden.  | Rachael Butler | 01-Apr-2023 | <div style="width: 10%;"><div style="width: 10%;"></div></div> 10% |          | Q4 update: Eden District Council is part of the Waste Carbon Reduction Group that explore opportunities to reduce our waste and carbon emissions related to it. The sustainability team has been attending many webinars and meeting to discuss about ways to improve our waste management.         |

### ZC4 Zero Carbon Theme 4- Support- Actions outlined in Zero Carbon Strategy under 'Support Theme'

| Ref:     | Milestone  | Assigned To | Target      | Progress   | Risk Rag | Progress in previous Quarter- specify blockages/challenges/achievements  |
|----------|--|-------------|-------------|--|----------|--|
| ZC4 S1.1 | Through the Greening Eden Businesses Programme provide specialist advice and grants on measures to reduce both costs and carbon emissions. | Ellie Hill  | 01-Apr-2023 | <div style="width: 60%;"><div style="width: 60%;"></div></div> 60% |          | Q4 update: The Greening Eden Businesses scheme is a success with more than 40 businesses that have showed an interest and some that are getting ready to go through the grant panels. The sustainability is continuing to promote the scheme and are trying to reach more businesses across the Eden District. |
| ZC4 S2.1 | Establish Community Support Schemes to help residents develop low carbon projects  | Ellie Hill  | 01-Apr-2023 | <div style="width: 30%;"><div style="width: 30%;"></div></div> 30% |          | Q4 update: The COP26 community fund has been launched early 2022. The sustainability team is now finalising the guidance and application form to be publish and accessible on our website as soon as possible.   |
| ZC4 S3.1 | Analysis of data to estimate carbon emission savings gained through the Green Homes Grant.   | Ellie Hill  | 01-Apr-2023 | <div style="width: 25%;"><div style="width: 25%;"></div></div> 25% |          | Q4 update: The sustainability team has analysed and estimated the carbon saving for the GHG LAD1a phase. We are now in process to analyse the LAD1b.   |

## Sustainability Actions Report- Actions as per Zero Carbon Strategy (Sustainability Portal) Generated on: 29 April 2022

### ZC5 Zero Carbon Theme 5- Comm Engagement and Publicity- Actions outlined in Zero Carbon Strategy under 'Community Engagement and Publicity Theme.'

| Ref:        | Milestone  | Assigned To | Target      | Progress   | Risk Rag | Progress in previous Quarter- specify blockages/challenges/achievements   |
|-------------|--|-------------|-------------|--|----------|---|
| ZC5 CEP 1.1 | Engage with Parish Councils and support the use of the Carbon Calculator   | Ellie Hill  | 31-Dec-2022 | <div style="width: 15%;"><div style="width: 15%;"></div></div> 15% |          | Q4 Update: The sustainability has been engaging with Parishes that have showed an interest through the Greening Campaign. We are planning to continue to engage with new Parishes in the next few months.   |
| ZC5 CEP 1.2 | Launch of COP26 Community Funding Grant                                    | Ellie Hill  | 01-Apr-2023 | <div style="width: 50%;"><div style="width: 50%;"></div></div> 50% |          | Q4 Update: The COP26 community fund has been launched early 2022. The sustainability team is now finalising the guidance and the application form to be accessible on our website as soon as possible. The grant panel is about to be ready with 4 members already interested to start. |
| ZC5 CEP 2.1 | Establish communication campaign to inform residents about sustainability. | Ellie Hill  | 01-Apr-2023 | <div style="width: 10%;"><div style="width: 10%;"></div></div> 10% |          | Q4 update: The sustainability has been working on a communication strategy plan to start communicating more internally and externally. We are planning to share more sustainability related topics/ funding/ information with Eden's resident.  |

### ZC6 Zero Carbon Theme 6- Land Use- Actions outlined in Zero Carbon Strategy under 'Land Use Theme'

| Ref:       | Milestone   | Assigned To    | Target      | Progress   | Risk Rag | Progress in previous Quarter- specify blockages/challenges/achievements  |
|------------|---|----------------|-------------|--|----------|--|
| ZC6 LU1 .1 | Assessment of carbon footprint sequestration potential of all EDC owned land in order to identify possible areas for offsetting projects. | Rachael Butler | 01-Apr-2023 | <div style="width: 25%;"><div style="width: 25%;"></div></div> 25% |          | Q4 update: The sustainability team has been discussing with Cumbria Wildlife Trust to ask for their services to assess Eden District Council's land. We are in the process to send them a GIS list of our lands and they will come back to us with a price and a time frame for them to come to our land to assess the biodiversity, natural habitats and landscape potential of them. |
| ZC6 LU2 .1 | Establish good partnerships with external organisations to promote and enhance biodiversity and natural habitats across Eden.             | Rachael Butler | 01-Apr-2023 | <div style="width: 25%;"><div style="width: 25%;"></div></div> 25% |          | Q4 update: Eden District Council is hoping to start working with Cumbria Wildlife Trust to assess the biodiversity and natural habitats of the Council lands.<br><br>The sustainability team is also hoping to start working with Eden River Trust (Service Level Agreement) in the next couple of months.   |

## Guide to the Criteria, Application Process and Conditions of Funding

Please read these guidance notes carefully and refer to them when completing the application form.

### 1. Introduction

- 1.1 To celebrate and continue the momentum of the COP26 in Glasgow, Eden District Council has allocated £160k for the 2022/2023 period to develop sustainability project led by community across the Eden District. Since the COVID19 pandemic, many people have found a refuge in outdoors spaces and started to be more conscious of the state of the natural environment and renewing their sense of community.
- 1.2 The COP26 community fund has been established to support and develop community based projects that will contribute to tackle climate changes, protect and enhance biodiversity and reduce carbon emissions.
- 1.3 Grants are available for groups and organisations who are involved in sustainability projects that benefit the residents of communities in Eden. Groups and organisations must demonstrate how their project or event will deliver wide benefit, contributing to the sustainability, vitality and well-being of Eden's communities.

### 2. Aim of the fund

The COP26 community fund scheme aims to:

- ✓ Improve the natural environment in Eden district
- ✓ Encourage sustainability and long-term actions
- ✓ Promote community engagement and participation in environmental and sustainability projects

This fund will assist Eden District Council to enact its plan to reach net-zero by 2030, improve the use of renewable energy, promote and enhance natural habitat and biodiversity, reduce air pollution and improve the health and wellbeing of the residents of Eden.

### 3. What can be funded?

The fund will support a wide range of environmental and sustainability projects covering the following themes.

## Project Categories

| Project Category              | Types of Projects Supported  | Maximum Grant Levels | Category (see section 8) |
|-------------------------------|--|----------------------|--------------------------|
| Climate change and resilience | Nature based solution to resilience and climate change adaptation. Enhancing climate change resilience of rural communities.(e.g. Ecosystem-based adaptation (EbA), multi-use native tree species) | £20,000              | 3                        |
| Renewable energy projects     | Installation of solar pv, wind turbine, battery system or other renewable technology.  | £30,000              | 3                        |
| Heat network projects         | Common ground heat pump for heating multiple buildings.  | £30,000              | 3                        |
| Biodiversity projects         | Enhancing natural habitat (woodland, rivers, peat, etc.) and biodiversity.   | £5,000               | 1                        |
| Reduction of carbon emissions | Electric car chargers, renewable energy, building improvement.   | £10,000              | 2                        |
| Waste and resources           | Local waste management and circular economy projects for the community.  | £5,000               | 1                        |

Successful projects will have a community interest and a positive impact on one or more of the themes listed above.

If you are applying to fund a new natural habitat project (e.g. wildflower, meadow, woodland, etc.) you must consider who will carry out the maintenance of this place in the future.

- 3.1 Up to 80% of total project can be applied for. The minimum contribution (match funding) required from applicants is 20%. This can be made up of the group's own cash contribution, donations, grants and sponsorship and a maximum of 10% in-kind volunteer time or materials.
- 3.2 Please note that the average level of grant is likely to be in the region of £5,000 - £20,000.
- 3.3 Ambitious projects that demonstrate exceptional benefits for the environment and for communities can be eligible for higher grants level.

#### **4. What will not be funded?**

- 4.1 The COP26 Community Fund grant will not support:
- i. Projects or events located outside the boundary of Eden District.
  - ii. Projects which are for private gain.
  - iii. Project that do not provide any benefit to Eden communities.
  - iv. Revenue costs (salaries, project officer or other employee costs, rents, statutory training etc.).
  - v. General appeals or sponsorship.
  - vi. Activities of a mainly political or religious nature, including improvements to the fabric of church buildings (non-religious community activities held within a place of worship may be eligible).
  - vii. Contingency funds, income deficits, bridging loans or security against a loan.
  - viii. Project that do not demonstrate a need for community and sustainability.

#### **5. Criteria for funding**

- 5.1 Applications to the COP26 community fund scheme are welcome from community groups or properly constituted organisations serving the resident of Eden.
- 5.2 The organisations applying for the grant must:
- ✓ be non-profit making
  - ✓ be properly managed and hold regular meetings
  - ✓ have audited accounts and financial transparency
- 5.3 Community organisations who may apply include:
- ✓ Voluntary and community groups
  - ✓ Residents associations
  - ✓ Registered charitable organisations
  - ✓ Constituted clubs and societies – i.e. an organisation with a governing document such as a constitution or a set of rules and a committee.
  - ✓ Parish and Town Councils.
- 5.4 The community group or organisation must be based in Eden and locally managed – e.g. the main part of the committee/ board members/ trustees must be from the local community within Eden district boundaries.

5.5 We do not accept applications from:

- ✗ Any statutory organisations, including schools
- ✗ Families
- ✗ Individuals
- ✗ For-profit companies
- ✗ Groups that have no formal constitutions

5.6 Applications will be assessed on their ability to:

- deliver wide community benefit, contributing to the sustainability, vitality and well-being of Eden's communities, such as encouraging volunteering and participation;
- contribute to locally identified community needs and priorities (such as in Community Led Plans etc);
- demonstrate value for money (through obtaining written quotes and estimates);
- measure the success of a project
- demonstrate equality of opportunity and the elimination of discrimination.

5.7 To apply to the COP26 community fund your group or organisation must have:

- a written governing document or constitution
- a bank or building society account in the name of your group or organisation with at least two unrelated signatories. (Please do not use any personal bank or credit card accounts to make purchases.)

5.8 You are required to provide all necessary documentation to support your application, including copies of written quotes and estimates for **all** items of expenditure of £50 and over. The written quotes and estimates must display the relevant company names and addresses and be less than six months old.

5.9 Grants will not be awarded retrospectively (eg for work or equipment already purchased or events which have already taken place).

5.10 We will not make more than one award during 2022/2023 to the same organisation or group unless they are towards an identifiably different. The first must be completed and a Project Completion Form returned before a second application is considered.

5.11 It is unlikely that the COP26 community fund will be able to provide grants for all potentially eligible applications. Therefore, we reserve the right to prioritise applications to achieve best value for money. We also reserve the right to decline applications which do not meet the stated criteria.

5.12 If your project is based in a building or on land that is leased from someone else, you need to demonstrate that you have a reasonable amount of time left on your lease. Your current lease should be at least as long as the expected lifespan of equipment purchased. If you are applying for building work to be carried out on a leased property, you should demonstrate that the length of your lease enables your organisation to get value for money from the project.

## 6. How your application is dealt with

- 6.1 On receipt of your application we will make an initial assessment. This will check that your group or organisation and project or event are eligible and that all required supporting documentation has been provided. We may contact you to obtain missing information, documentation or for clarification.
- 6.2 We aim to acknowledge receipt of your application within five working days. This will be by email unless no email address is provided, in which case a letter will be posted.
- 6.3 You may be contacted by an officer for further details and clarification if you have a large cash reserve that is not being used towards the project. This will not necessarily effect your application.
- 6.4 Eligible applications which are accompanied by the required supporting documentation will be forwarded to the COP26 Community Grant Panel for consideration. The COP26 Community Grant Panel is a forum of key partners capable of influencing the delivery of sustainability and community based projects that contribute to the sustainability, vitality and well-being of communities in the Eden district.
- 6.5 The COP26 Community Grant Panel will meet for three separate tranches of applications during 2022-2023. Applications will be presented to the COP26 Community Grant Panel in summary format although the full applications will also be made available to them.
- 6.6 The COP26 Community Grant Panel will make recommendations to Eden District Council's Executive for which applications to support and the level of grant to be awarded.
- 6.7 Applicants will be informed (usually by email) whether the COP26 Community Grant Panel has recommended their project or event to receive a grant, within five working days of the meeting taking place.
- 6.8 The COP26 Community Grant Panel may request further information to answer queries and provide greater detail of your project or event or they may ask for a site visit where appropriate.
- 6.9 Eden District Council's Executive will consider recommendations from the COP26 Community Grant Panel and will either agree or refuse applications. The Executive may also amend the level of grant recommended by the COP26 Community Grant Panel.
- 6.10 Decisions taken by Executive are subject to a 'Scrutiny call-in' period of five working days from the decision notice being issued during which time a decision regarding an award could potentially be challenged. Therefore it is not possible to confirm an award until the Scrutiny call-in period has ended.
- 6.11 Eden District Council's Executive decision is final and cannot be changed (no appeals or discussions will be entered into).
- 6.12 We will aim to inform you of the outcome of your application within five working days of the Scrutiny call-in period ending. This will be by letter and if your application has been successful we will arrange for the funds to be released.
- 6.13 Applicants who are unsuccessful will be notified by letter within two weeks of the end of the Scrutiny call-in period.
- 6.14 Payment will be made in two stages, 75% of the grant being paid prior to commencement of the project or event and 25% on completion.
- 6.15 A Project Completion Form will be completed and submitted by the applicant on completion of their project or event in order to draw down the final 25% payment.

## **7. Conditions of funding**

- 7.1 Grants must be spent within two years of an award being made (from the date on the grant offer letter).
- 7.2 Grants awarded must be spent on the purpose stated in the application. If for any reason your circumstances change or you wish to vary the way in which you spend your grant, you are required to contact us to request written permission to do so.
- 7.3 In the event of a group or Organisation ceasing to operate or failing to undertake or complete the project or event for which the grant was offered, Eden District Council reserves the right to withhold payment, to reduce an award or seek its recovery.
- 7.4 Financial support provided by Eden District Council should be acknowledged on all relevant printed publicity, on websites and in information given to the press. Relevant guidance will be provided to applicants at the time of a grant offer being made.
- 7.5 Your group or organisation must ensure that its project or event operates within the requirements of all legislation.
- 7.6 Your group or organisation should ensure equality of opportunity and the elimination of discrimination in the delivery of its project or event.
- 7.7 You will be required to inform the Council when your project or event has been completed and to submit a Project Completion Form within three months of completion (we will provide you with a template). You will also need to provide relevant invoices and a bank statement showing payments made. Groups or organisations who do not complete and return a satisfactory Project Completion Form may be required to return their funding and will not be considered for future funding.

## **8. Project Delivery**

- 8.1 By submitting an application to Eden District Council, the organisation named in the applications agrees (if awarded a grant) to:
- Use the grant only for the project described in the application and only for expenditure made after the date of the grant award.
  - For category 1 and 2 projects – to provide information and report about the project and its benefit on community and sustainability both during (after 6 months) and after the end of the project.
  - For category 3 projects – to provide information and regular reports about the project and its benefit on community and sustainability (every 6 months until end of the project and one final report at the end of the project).
  - Act lawfully in carrying out the project in relation with best practices and guidance from any relevant regulators and follow any guidelines issued.
  - Hold the grant in a UK based bank account or building society account.



## Contact us

Eden COP26 fund  
Eden District Council  
Mansion House  
Penrith  
Cumbria CA11 7YG

**Email:** [edencop26fund@eden.gov.uk](mailto:edencop26fund@eden.gov.uk)

[www.eden.gov.uk/edencop26communityfund](http://www.eden.gov.uk/edencop26communityfund)

DRAFT